

NOTE: Rainbow Lake is the major source of Whistler's drinking water. Swimming, fishing and camping is prohibited.

NOTE: Official campsite is found beyond watershed boundary at Hanging Lake.



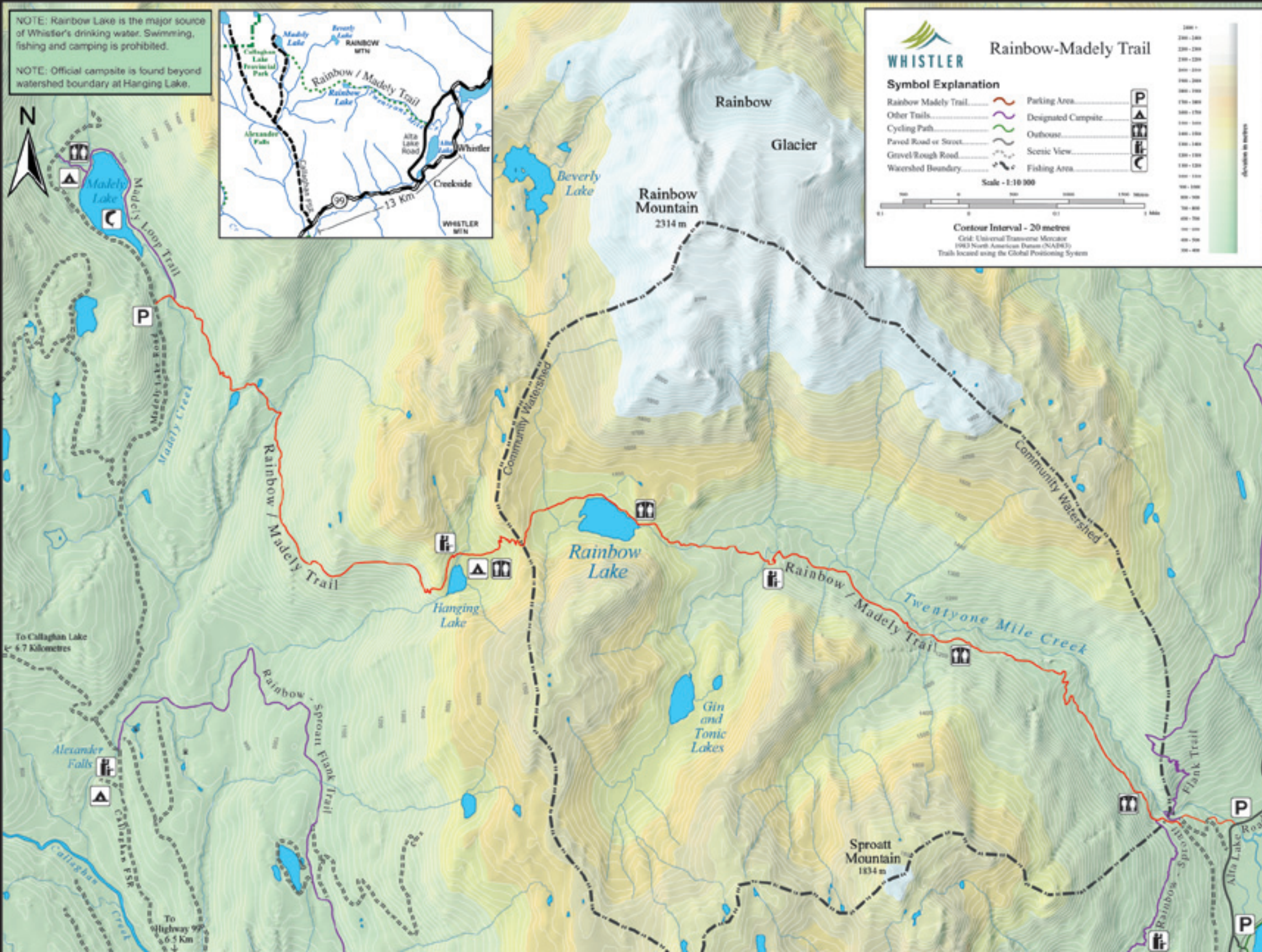
WHISTLER Rainbow-Madely Trail

Symbol Explanation

Rainbow Madely Trail		Parking Area	
Other Trails		Designated Campsite	
Cycling Path		Outhouse	
Paved Road or Street		Scenic View	
Gravel/Rough Road		Fishing Area	
Watershed Boundary			

Scale - 1:10 000

Contour Interval - 20 metres
 Grid: Universal Transverse Mercator
 1983 North American Datum (NAD83)
 Trails located using the Global Positioning System



RAINBOW MADELY TRAIL



Wind up the mountainside among the giant Douglas-firs and hemlocks of the coastal forest. Rest beside a tranquil alpine lake and breathe in the sparkling air. Camp under dancing points of light from stars that are close enough to touch. These are what make a hike over the Rainbow Madely Trail a special part of the Whistler experience.

